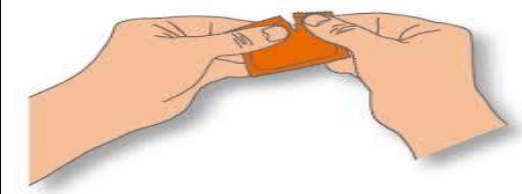


Condoms



Condoms come in many sizes and varieties
Always check the packet to make sure it's
in date and the packet is not burst or open.



Careful opening the packet
Tear down the jagged edge



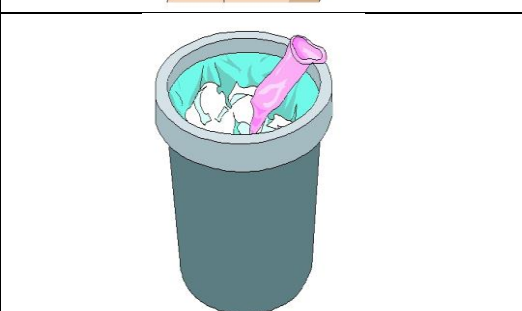
Take the condom out of the packet



Squeeze the tip of the condom to get rid of
any air, then place it over the tip of the
penis
Roll the condom all the way down to the
base of the penis.
If it won't roll down it's the wrong way
round - discard and use a new one



After sex while the penis is still erect hold
the condom in place as you withdraw your
penis then simply take the condom off.



Wrap the condom in a tissue and put in the
bin.

Don't put it down the toilet as this can
cause blockages.

You can get free condoms from the C-CARD
Scheme and SWISH